

# N.P. KING PTE. LTD.

## ‘NPK’ STOP VALVE to BS1010: 1973 Manufactured by N.P. King PTE Ltd, Singapore

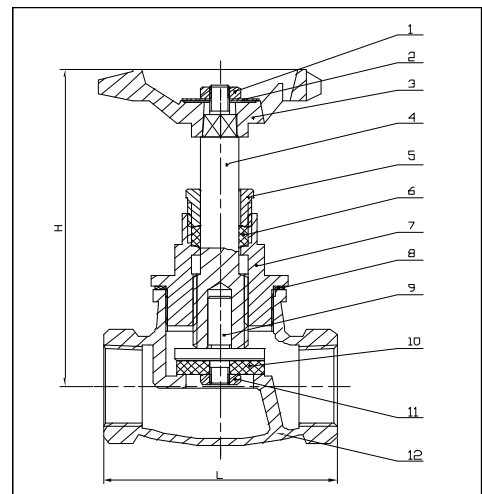


Model No: SV001

Dimension			
Size	Length (Inch)	Height (Inch)	
		Open	Close
1/2"	2.20	3.37	3.06
3/4"	2.55	3.60	3.27
1"	3.12	4.56	4.06
1 - 1/4"	3.64	4.77	4.23
1 - 1/2"	3.87	5.19	4.63
2"	4.76	6.08	5.44

- Scope of Use: For use in general water supply system to serve the purpose of flow control.
- Technical Features: ‘NPK’ Stop Valves are manufactured in accordance with BS 1010.
- Quality Certification: Tested by laboratory recognized by HK WSD for the necessary quality compliance.
- Characteristics: Brass Loose-Jumper type Stop Valve with Alloy Wheel, female iron x female iron. Female connections on all stop valves are to BS 21 Taper. Hydraulic Pressure Rating is 20 Bar at 60s.

Material List		
No.	Part	Specification
1	Handwheel Nut	Brass
2	Identification Plate	Aluminum
3	Handwheel	Aluminum
4	Spindle	Brass
5	Pack Nut	Brass
6	Packing	PTFE
7	Bonnet	Brass
8	Head Seal	EPDM
9	Washer Plate	Brass
10	Washer	EPDM
11	Nut	Brass
12	Body	Brass



Information contained in this brochure is provided as a guide only. NPK does not warrant that the information is accurate or without error or omissions. NPK reserves the right to correct any errors or misprints.

Email: [admin@npking.com](mailto:admin@npking.com)